



**US Army Corps
of Engineers** ®
Memphis District

ISSUE DATE: February 6, 2026

_____ **PUBLIC NOTICE** _____

EXPIRATION DATE: March 8, 2026

JOINT PUBLIC NOTICE
U.S. ARMY CORPS OF ENGINEERS
And
KENTUCKY ENERGY AND ENVIRONMENT CABINET

TITLE: Authorized navigation channel maintenance within the Mississippi River and Elvis Stahr Harbor within Memphis District’s Area of Responsibility (AOR) in the Commonwealth of Kentucky

AUTHORITY: The Memphis District of the U.S. Army Corps of Engineers (Corps), hereby gives notice pursuant to Section 404 of the Clean Water Act (33 U.S.C. §1344) **and** Section 10 of the Rivers and Harbors Act of 1899 (33 U.S.C. §403). The purpose of this public notice is to solicit comments from the public regarding the work described below:

LOCATION: The project would affect navigable waters of the United States associated with the Mississippi River. Dredging would occur at various locations on the Mississippi River, between River Miles 885 and 952.7 Above the Head of Passes (AHP) and within Elvis Stahr Harbor at approximate River Mile 922 AHP, as shown on the attached location map.

PURPOSE: The purpose of the project is to maintain the authorized navigation channel within the Mississippi River and the Elvis Stahr Harbor within the Memphis District’s area of responsibility (AOR) in the Commonwealth of Kentucky. The purpose of the public notice is to renew the water quality certification with the Commonwealth of Kentucky, to advise all interested parties of the proposed activity, and to solicit comments and information necessary to evaluate the probable impact.

AVOIDANCE AND MINIMIZATION: The Corps of Engineers will only dredge the minimum amount required to maintain the authorized channel. No mitigation is proposed for this maintenance dredging project.

DESCRIPTION OF WORK: Dredging is conducted on an as-needed basis to maintain the minimum project channel dimensions at any river stage. Mississippi River channel maintenance dredging is done by use of dustpan hydraulic dredge. The dustpan dredge operates by making a series of relatively narrow, adjacent parallel cuts, discharging the material overboard in the same pattern as the dredge cuts and at a distance of approximately 800 feet perpendicular to the direction

of the cuts. The material may be discharged to either side of the dredge cut and is transported from the cut area to discharge area through a pipeline supported by pontoons. Harbor dredging is normally performed by a cutterhead hydraulic dredge operated by a contractor for the district under a contract.

The dustpan dredge deposits approximately 1.9 million cubic yards of material annually. Table I lists location by name and river mile and approximate annual quantities of material dredged in recent years. Due to the amount of bedload movement and the continual migration of sand bars, it is not possible to predict exact locations where dredging and associated discharge will be required. The anticipated discharge areas have been previously covered by earlier water quality certifications.

Designation of the proposed disposal sites for dredged and fill material associated with this federal project shall be made through the application of guidelines promulgated by the Administrator, Environmental Protection Agency (EPA), in conjunction with the Secretary of the Army. The Administrator, EPA, has not previously designated the areas as disposal sites. A Section 404(b)(1) evaluation will be prepared at the close of the comment period.

Table I. Current Dredging Sites Between Mississippi River Miles 885 and 952.7 AHP

CROSSING NAME	RIVER MILE	QUANTITY DREDGED CUBIC YARDS
Quaker Oats	952.7	158,213
Wolf Island	931	286,789
Williams	927.5	195,192
Beckwith	925.5	205,118
Hickman Hardpoint	920	115,669
Hickman Hardpoint	920	472,306
New Madrid Bend	890	215,505
New Madrid Harbor	889	8,402
New Madrid County Harbor	885	29,720

ELVIS STAHR HARBOR

The proposed work also entails maintenance dredging within the Elvis Stahr Harbor at approximate River Mile 922. The work will be accomplished using a cutterhead dredge. Approximately 162,352 cubic yards of material would be dredged.

WATER QUALITY CERTIFICATION: The Memphis District is requesting water quality certification for the above-described activity from the Water Quality Certification Section of the Kentucky Energy and Environment Cabinet. Comments should be sent to the Water Quality Certification Section at the following: 401wqc@ky.gov.

SECTION 404 OF THE CLEAN WATER ACT AND SECTION 10 OF THE RIVERS

AND HARBORS ACT: The impact of the activity on the public interest is being evaluated in accordance with Section 10 of the Rivers and Harbors Act of 1899 and Section 404 of the Clean Water Act.

ENDANGERED SPECIES: Navigational dredging within the Mississippi River is conducted under the terms of a Biological Opinion for the Channel Improvement Program, Mississippi River and Tributaries Project Lower Mississippi River, dated 12 December 2013. This application is being coordinated with the U.S. Fish and Wildlife Service. Any comments they have submitted regarding endangered or threatened wildlife or plants or their critical habitat will be considered in our evaluation of the described work.

CULTURAL RESOURCES: The Corps is evaluating the undertaking for effects to historic properties as required under Section 106 of the National Historic Preservation Act. This public notice serves to inform the public of the proposed undertaking and invites comments including those from local, State, and Federal government Agencies with respect to historic resources. Our final determination relative to historic resource impacts may be subject to additional coordination with the State Historic Preservation Officer, federally recognized tribes and other interested parties.

PUBLIC INTEREST REVIEW: The purpose of this public notice is to advise all interested parties of the proposed activities and to solicit comments and information necessary to evaluate the probable impact on the public interest.

The decision to proceed with this project will be based on an evaluation of the probable impact, including cumulative impacts, of the activity on the public interest. That decision will reflect the national concern for both protection and utilization of important resources. The potential benefits that reasonably may be expected to accrue from the activity must be balanced against its reasonably foreseeable detriments. All factors which may be relevant to the activity will be considered, including the cumulative effects thereof; among those are conservation, economics, aesthetics, general environmental concerns, wetlands, cultural values, fish and wildlife, flood hazards, floodplain values, land use, navigation, shoreline erosion and accretion, recreation, water supply and conservation, water quality, energy needs, safety, food and fiber production, mineral needs, considerations of property ownership and, in general, the needs and welfare of the people.

The Corps of Engineers is soliciting comments from the public; federal, state and local agencies and officials; Native American Tribes; and other interested parties in order to consider and evaluate the impacts of the proposed activity. Comments are used in preparation of the final environmental assessment and/or draft environmental impact statement pursuant to the National Environmental Policy Act and are also used to determine the overall public interest of the proposed activity.

PUBLIC HEARING: Any person may request in writing, within the comment period specified in this notice, that a public hearing be held to consider this proposed project. Requests for a public hearing shall clearly state the reason for holding a public hearing. The District Engineer will determine if the issues raised are substantial and whether a hearing is needed in order to reach a decision on the project.

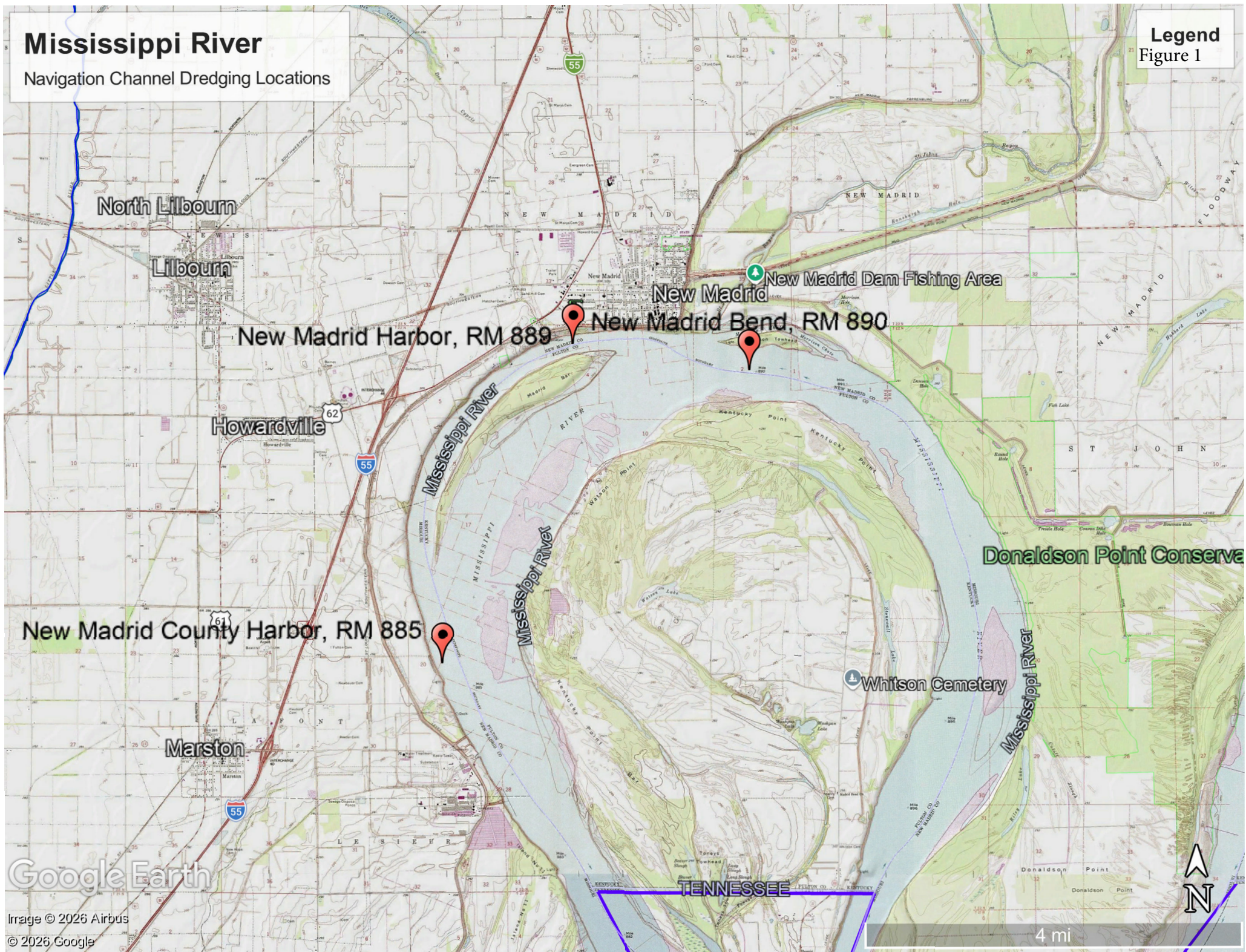
COMMENTS OR REQUEST FOR ADDITIONAL INFORMATION: Send comments to the Corps of Engineers, Memphis District. Comments may be sent via mail or E-mail to the following:

U.S. Army Corps of Engineers Memphis District
167 North Main Street, Room B-202
Memphis, Tennessee 38103-1894
E-mail: CEMVMRegulatory@usace.army.mil
phone: (901) 544-3471

Mississippi River

Navigation Channel Dredging Locations

Legend
Figure 1



Google Earth

4 mi

Mississippi River

Navigation Channel Dredging Locations

Legend
Map 2 of 3

Towosahgy State Historic Site

Wolf Island, RM 931

Williams, RM 927.5

Whaynes Corner

Big Oak Tree State Park

Big Oak Tree State Park Office

Beckwith, RM 925.5

Dorena Access

Green Island Conservation Area

Adams Ar

Hickman Hardpoint, RM 920

Hickman

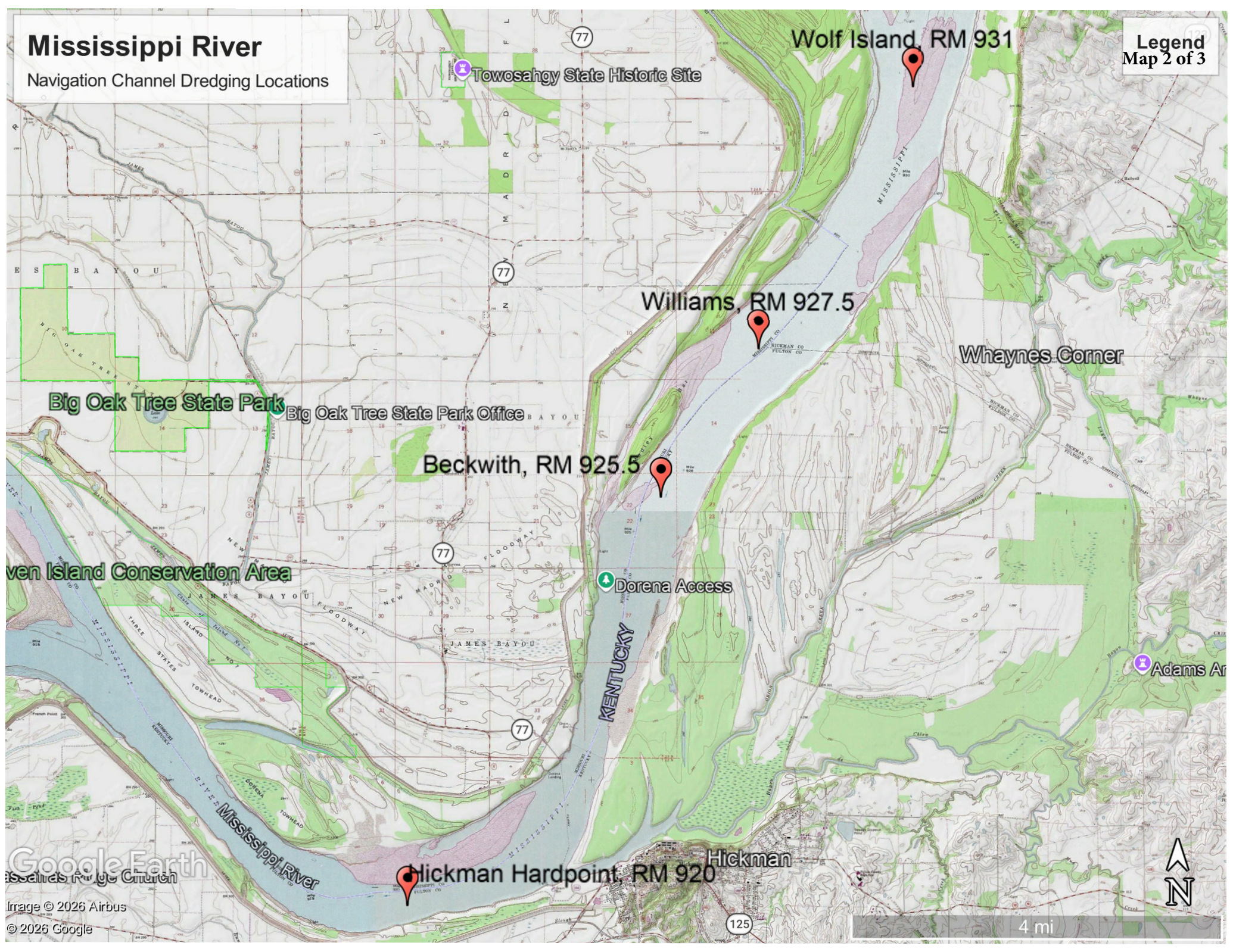
Google Earth
Satellite Imagery

Imagery © 2026 Airbus

© 2026 Google



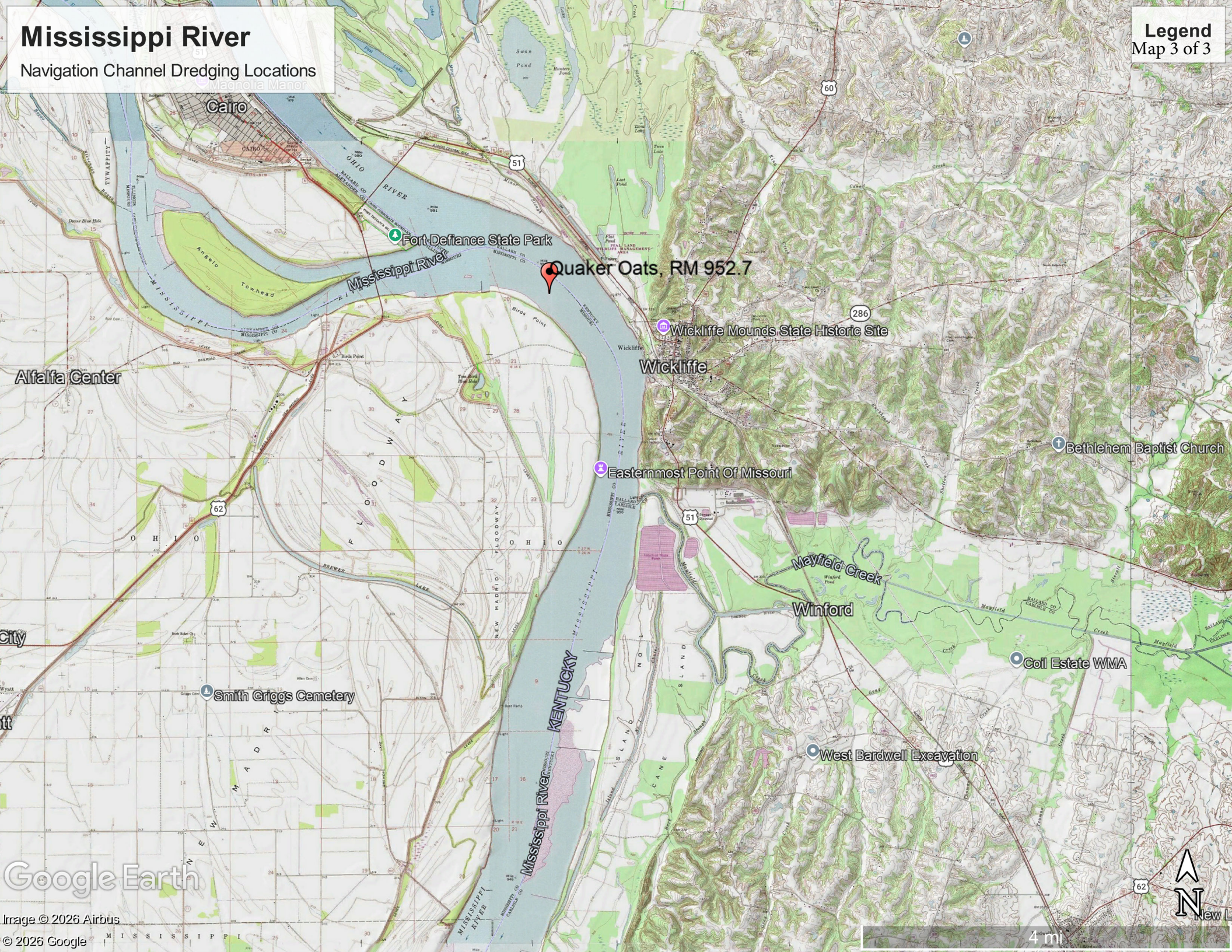
4 mi



Mississippi River

Navigation Channel Dredging Locations

Legend
Map 3 of 3



Alfalfa Center

Smith Griggs Cemetery

Fort Defiance State Park

Quaker Oats, RM 952.7

Wickliffe

Wickliffe Mounds State Historic Site

Easternmost Point Of Missouri

Winford

Mayfield Creek

Coil Estate WMA

West Bardwell Excavation

Bethlehem Baptist Church

Google Earth

Image © 2026 Airbus

© 2026 Google

4 mi

